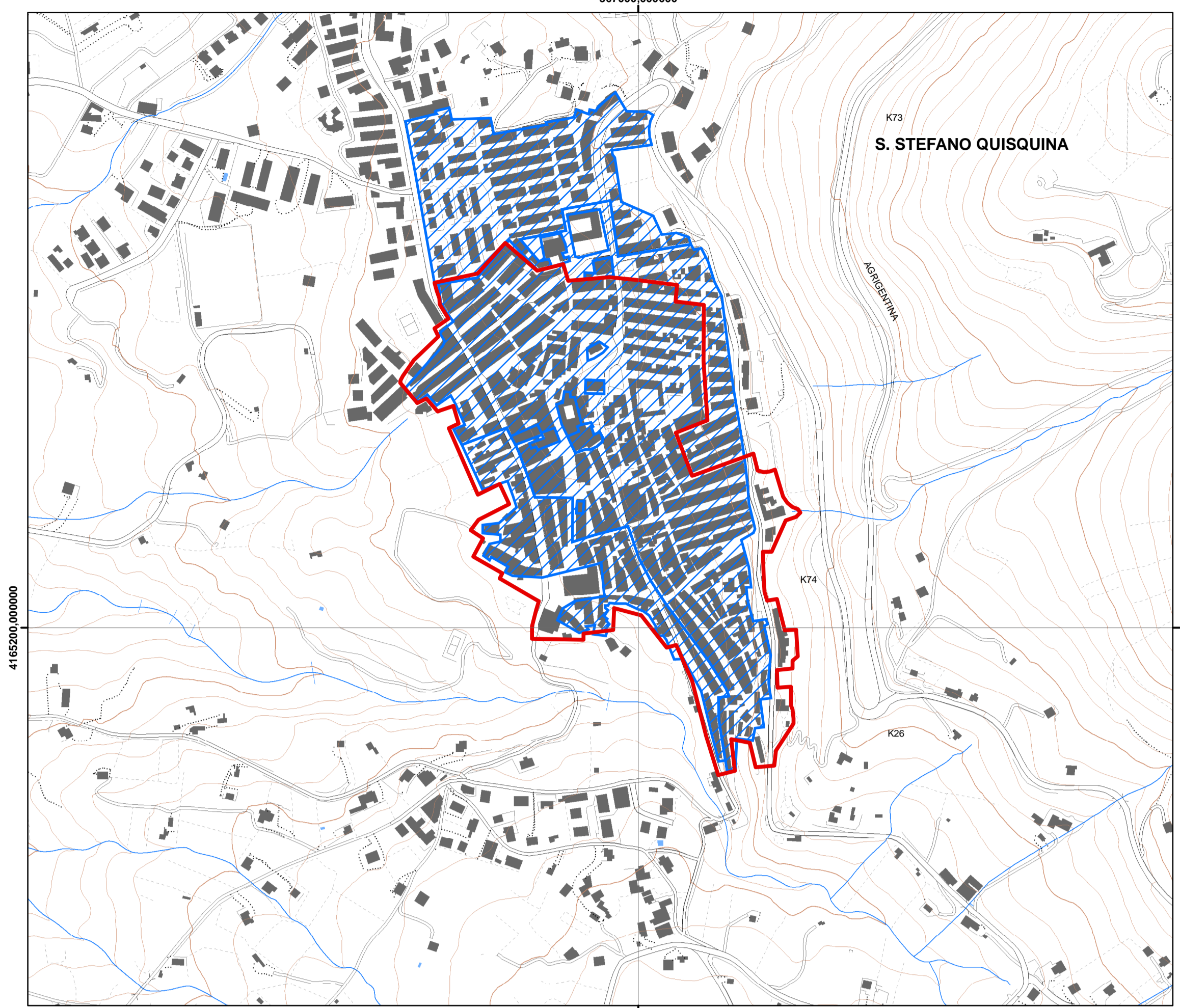
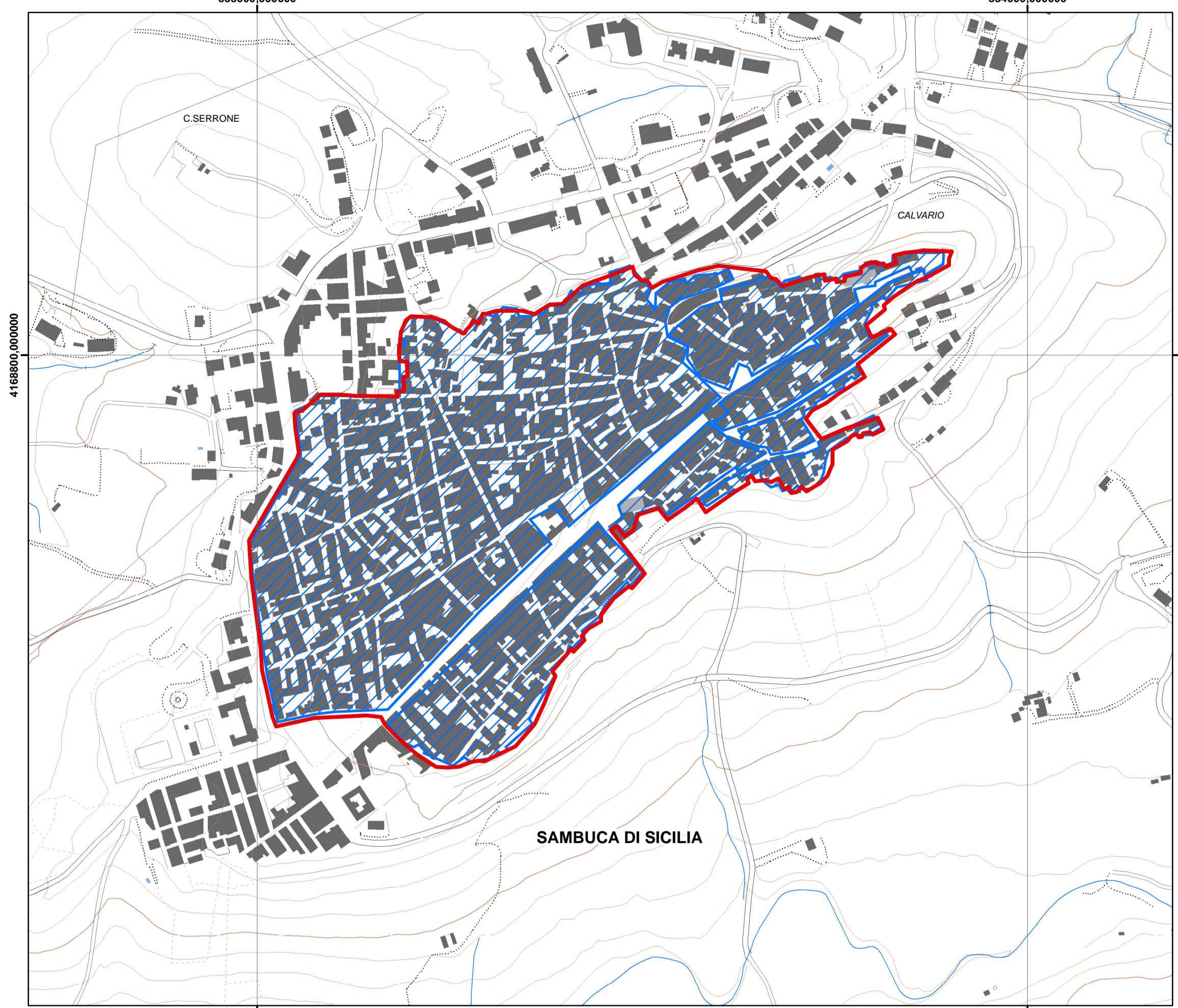


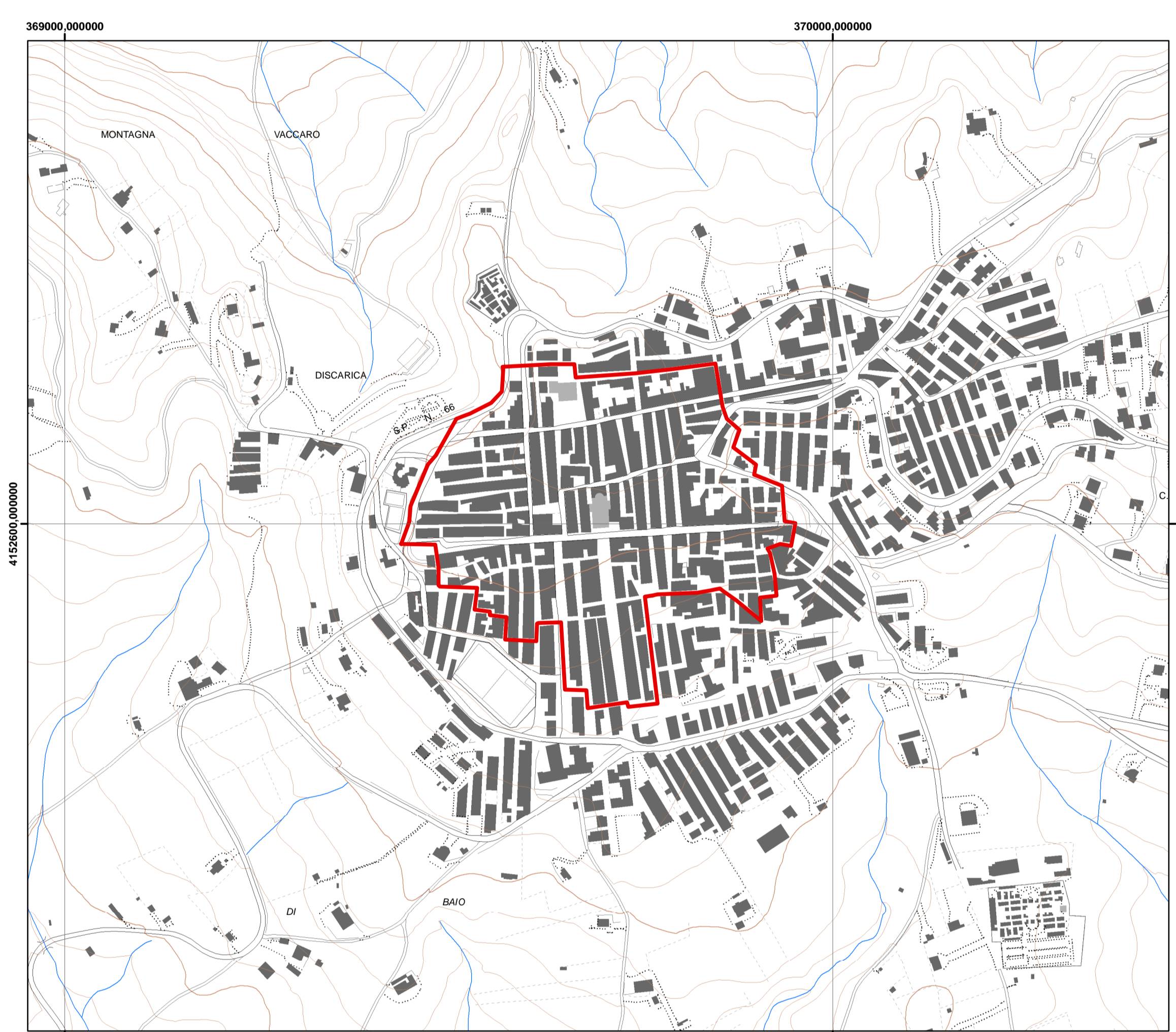
DIPARTIMENTO DEI BENI CULTURALI E DELL'IDENTITÀ SICILIANA
Il Dirigente Generale
Il Dirigente Responsabile
SOPRINTENDENZA PER I BENI CULTURALI ED AMBIENTALI DI AGRIGENTO
COORDINAMENTO TECNICO-SCIENTIFICO
CONTRIBUTI TECNICI SCIENTIFICI
CONSULENZA SCIENTIFICA
COLLABORAZIONI, RILIEVI E RACCOLTA DATI
OSSERVATORIO REGIONALE PER LA QUALITÀ DEL PAESAGGIO



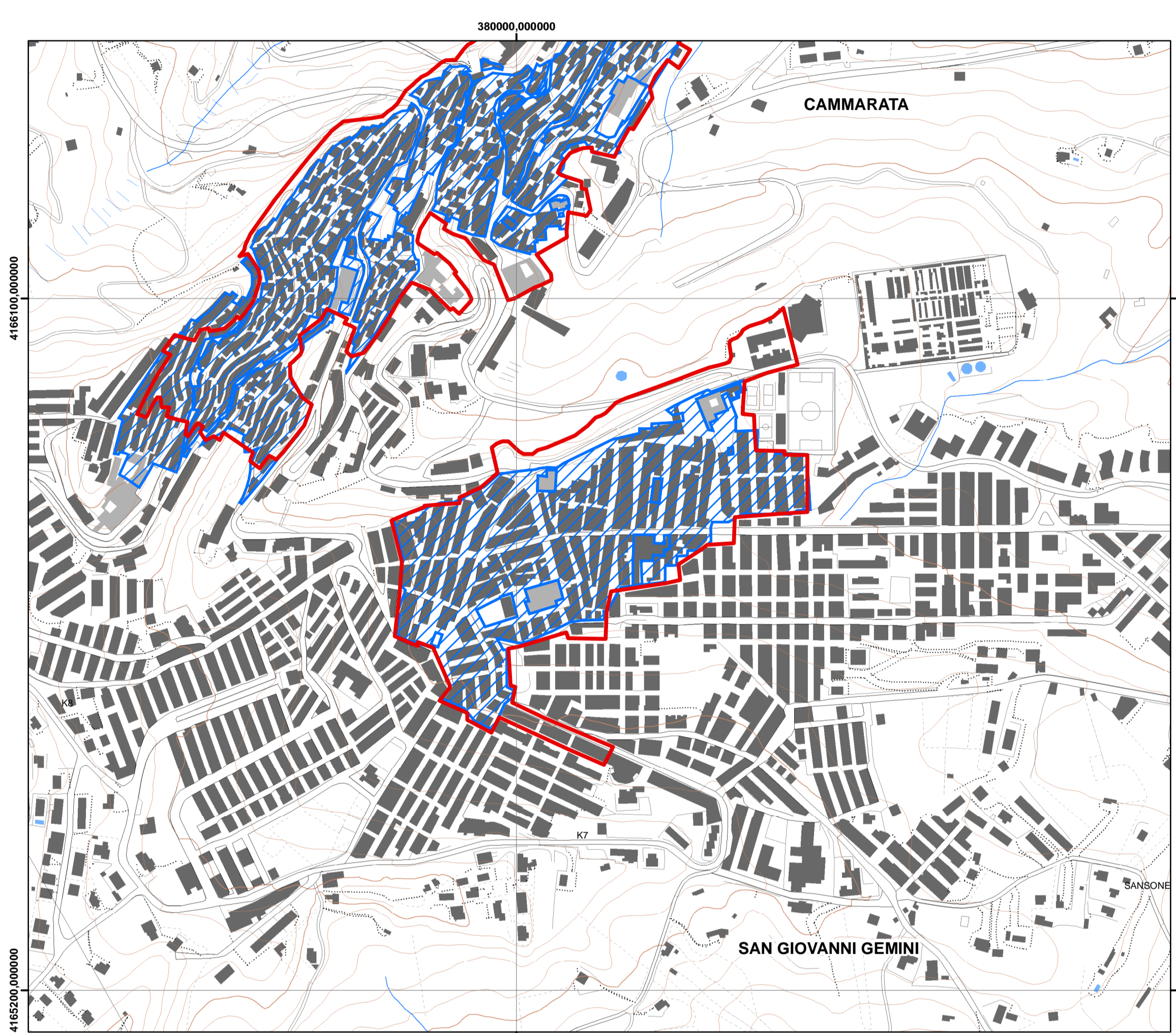
S.Stefano di Quisquina



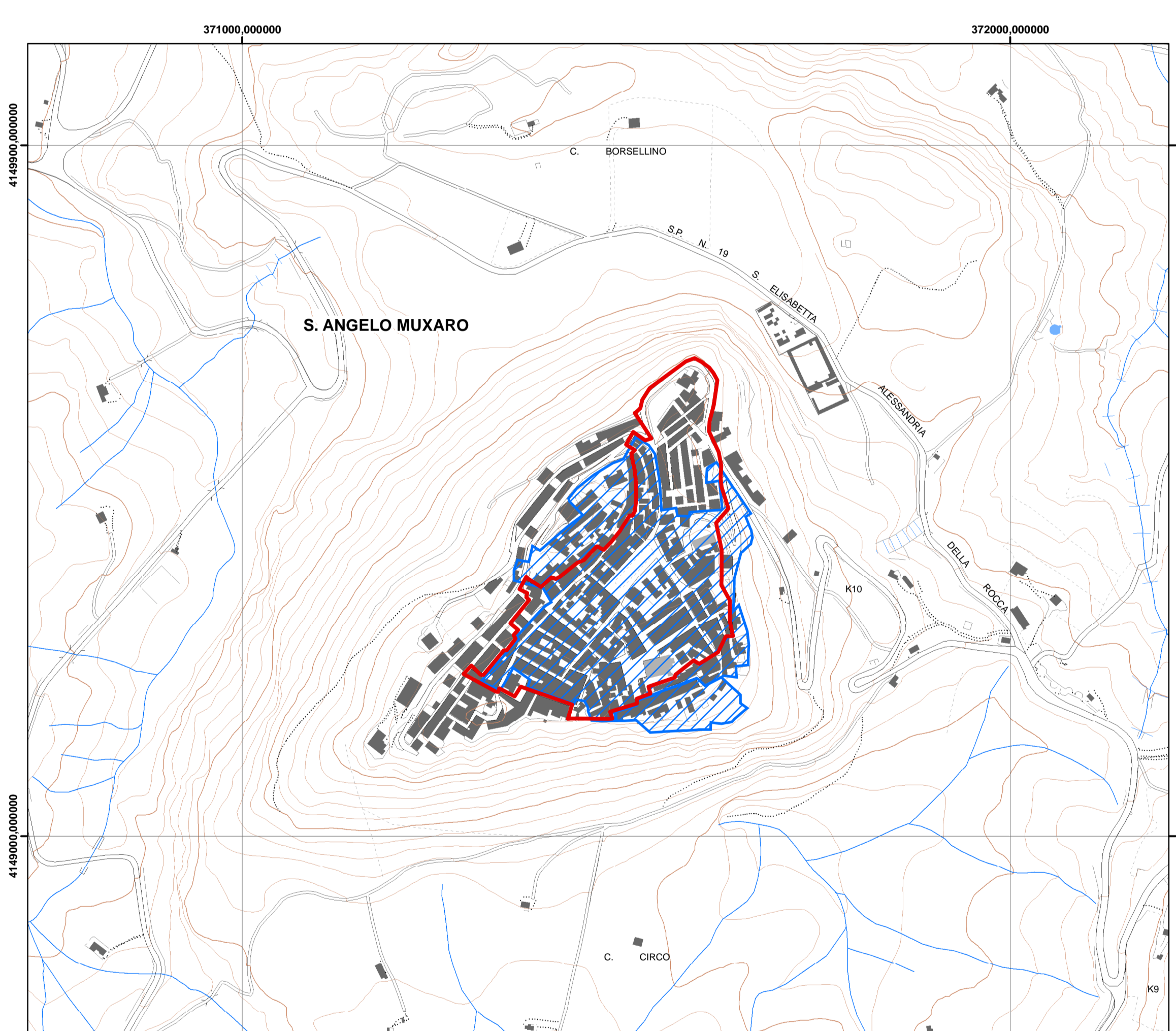
Sambuca di Sicilia



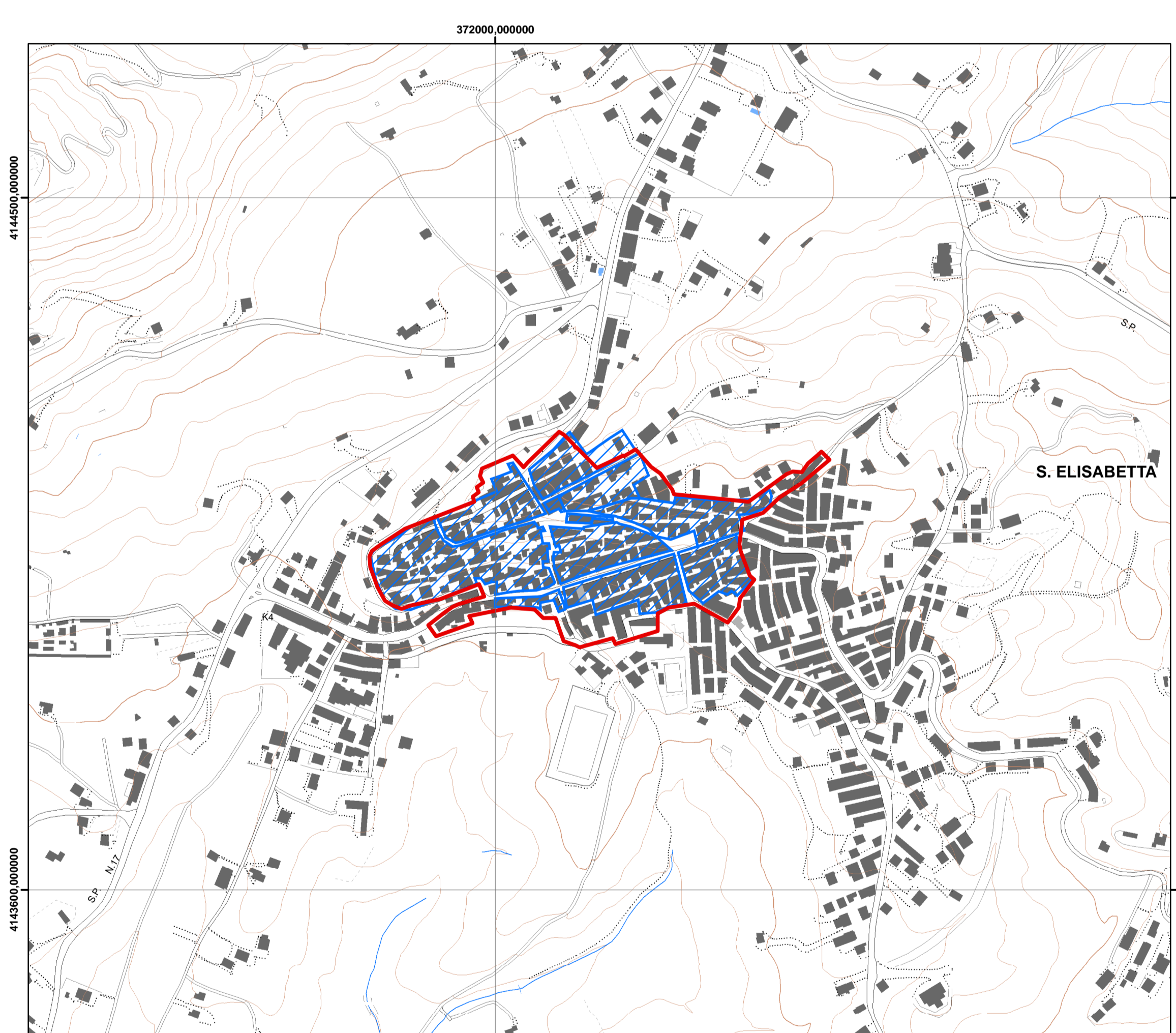
San Biagio Platani



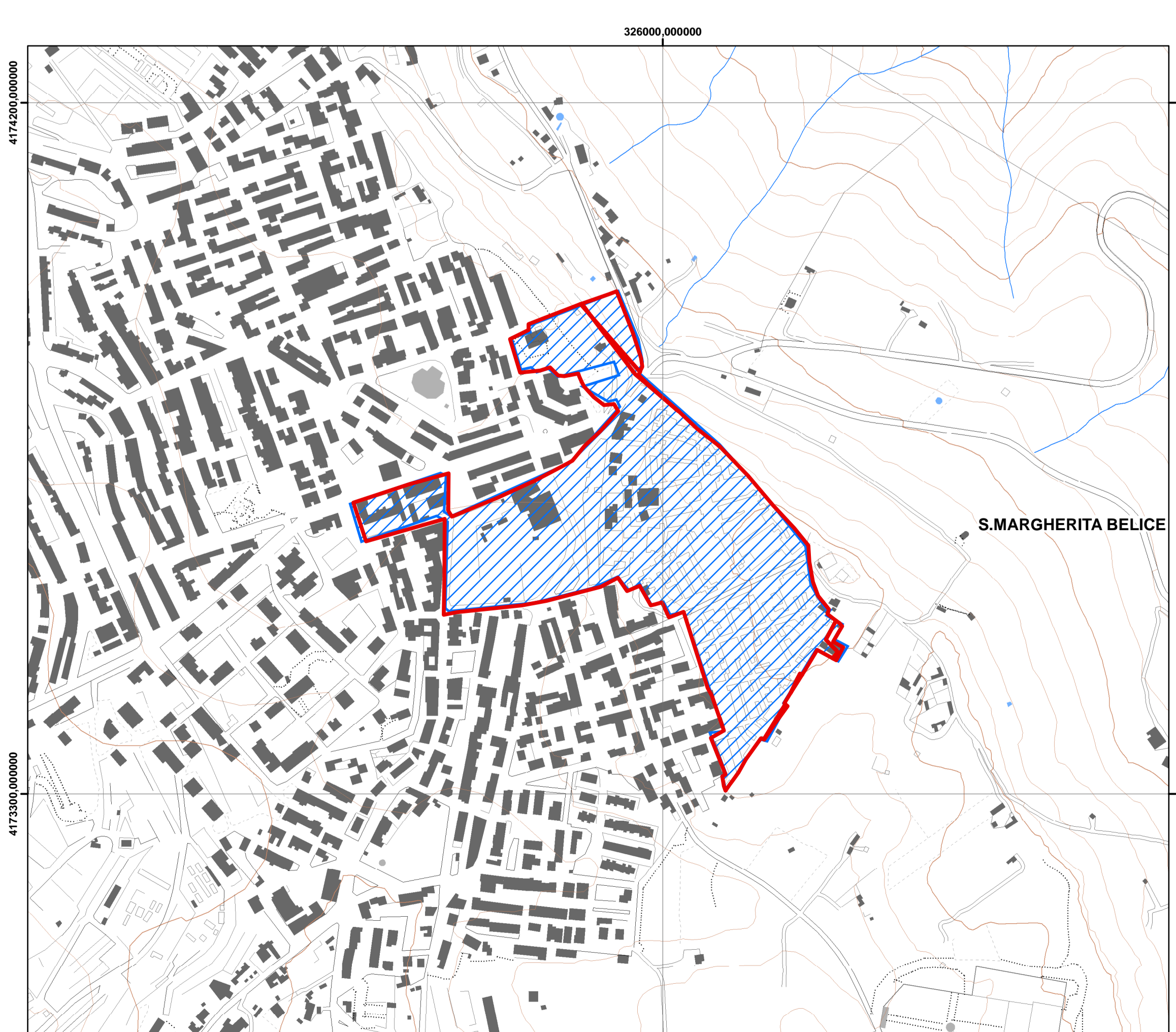
San Giovanni Gemini



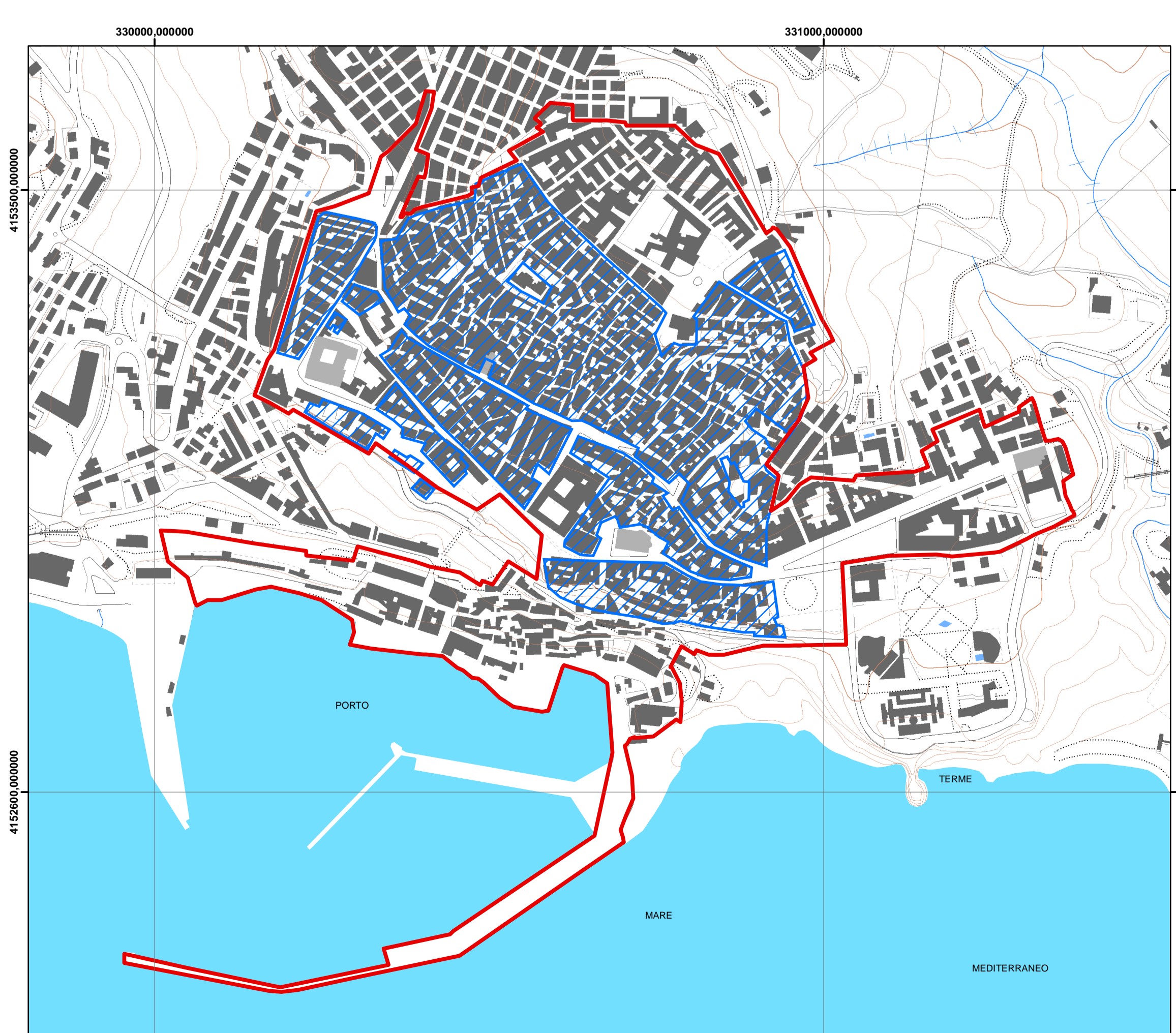
Sant'Angelo Muxaro



Sant'Elisabetta



Santa Margherita Belice



Sciacca

